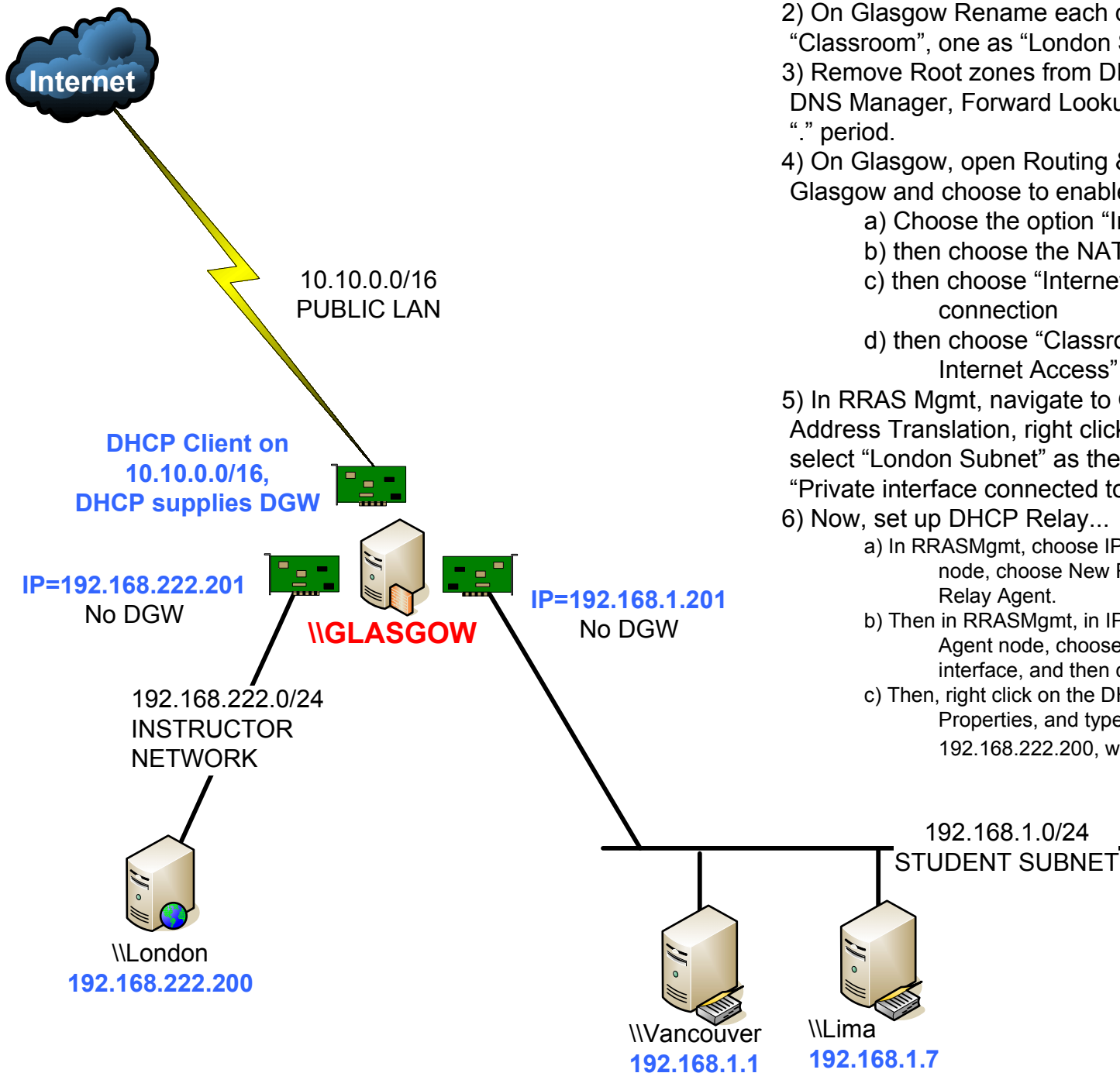


How to Set up \\Glasgow for MSCourse 2126



Additional Setup/Routing Procedures:

- 1) Set up IP Addresses as per the diagram.
- 2) On Glasgow Rename each connection object, one as "Classroom", one as "London Subnet", and one as "Internet".
- 3) Remove Root zones from DNS on Glasgow and London. Go to DNS Manager, Forward Lookup Zones, Delete the Zone with a "." period.
- 4) On Glasgow, open Routing & Remote Access. Right click on Glasgow and choose to enable RRAS.
 - a) Choose the option "Internet Connection Server"
 - b) then choose the NAT option (not ICS)
 - c) then choose "Internet" as the designated Internet connection
 - d) then choose "Classroom Subnet" as the "Shared Internet Access" connection.
- 5) In RRAS Mgmt, navigate to Glasgow/IP Routing/Network Address Translation, right click and choose "New Interface", then select "London Subnet" as the connection, and then choose "Private interface connected to private network". Click "OK".
- 6) Now, set up DHCP Relay...
 - a) In RRAS Mgmt, choose IP Routing, then right click on the General node, choose New Routing Protocol, then choose DHCP Relay Agent.
 - b) Then in RRAS Mgmt, in IP Routing, right click on the DHCP Relay Agent node, choose New Interface, select the "Classroom" interface, and then click OK on the resulting dialog box.
 - c) Then, right click on the DHCP Relay Agent node, choose Properties, and type in the IP Address of London, 192.168.222.200, which is the DHCP Server.



Made by George Squillace

Last Updated:
4/27/2005