

George J. Squillace

S-Q-L is in the name!

East Lansing, MI • 517-881-5020 • GeorgeJr@e-Squillace.com

Core Attributes

Excellent communicator, oral and written

Enthusiastic

Committed to providing value

Dedication to work and craft

Flexible

Prolific creator (SQL code, BI examples, website)

Work Experience

Summary: After 27 years in the computer training industry now employed as a Business Intelligence Developer using Power BI and Power Query and related tools and activities. Award-winning employee.

Data Engineer, January 2023 to present, **First National Bank of America**. Worked with a variety of tools and used a variety of skills supporting the data warehousing, reporting and other business intelligence functions within the bank.

Database Administrator (original title, **Application Developer**), December 2020 through December 2022, **Dewpoint**. Servicing multiple clients primarily as a Power BI Developer. Work involved other tools and skills such as writing SQL code for data validation, SSIS development and migration, SSRS migration, using SharePoint as a code repository, a brief introduction to Power Automate and conducted a number of training events. Conducted technical candidate interviews for Power BI positions.

Senior Technical Instructor, July 2005 to October 2020, **New Horizons Learning Solutions** (and later spun off to Focal Point Learning). Delivered training over **all areas of Microsoft SQL Server** including querying, database administration, database development, data warehouse design, SSIS and ETL, SSAS (both multidimensional and tabular data models), SSRS and **Microsoft Power BI**.

Technical Instructor, April 1997 – July 2005, **New Horizons**. Delivered Novell NetWare and Microsoft certified curricula to current and aspiring network administrators, network engineers, database administrators, database developers and business intelligence developers. Excellent background in TCP/IP networking, Windows Servers, Active Directory, Exchange Server, and ISA Server (firewall).

Instructor, August 1992 – June 1996, **New Horizons**. Taught popular DOS-based, Windows, and Macintosh software applications across several application categories such as Microsoft Project, Office applications and graphics applications to the advanced level.

Skilled online trainer for many years.

Work travel within the continental U.S. roughly 20-30% depending on the time period.

Education, Certifications, & Recognition

Bachelor of Science - Packaging (Technical Option)

Michigan State University, East Lansing, MI

Education, Certifications, & Recognition, continued

Microsoft Certified Trainer

Microsoft Certified: Azure Fundamentals

Microsoft Certified Solutions Expert: Data Management and Analytics Charter Member (Power BI)

Microsoft Certified Solutions Expert: Business Intelligence

Microsoft Certified Solutions Expert: Data Platform

Microsoft Certified Solutions Associate: SQL Server 2012/2014

Microsoft Certified Solutions Associate: Windows Server 2008



Dewpoint Rookie of the Year 2021

e-Squillace "About" page

2007 President's Club Award (Employee of the Year)

New Horizons Instructor of the Year 1995, 1998, & 1999

New Horizons Instructor of the Month, several instances

Activities

Greater Lansing Area for SQL Server (GLASS)

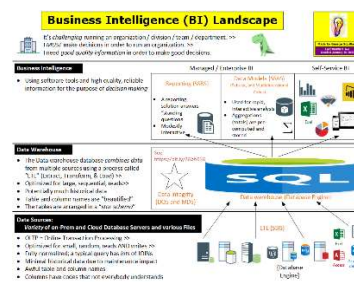
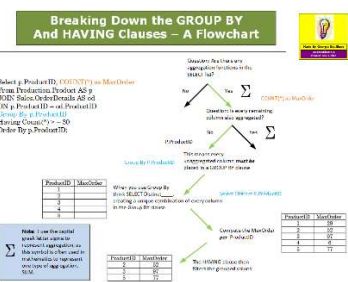
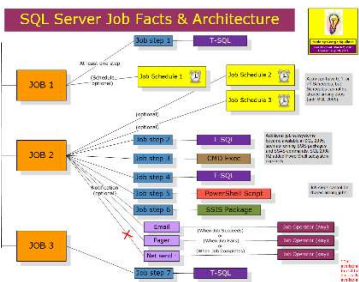
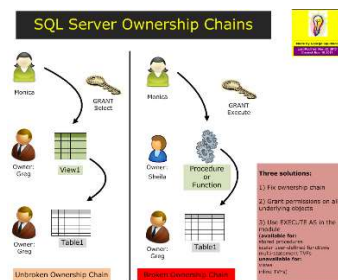
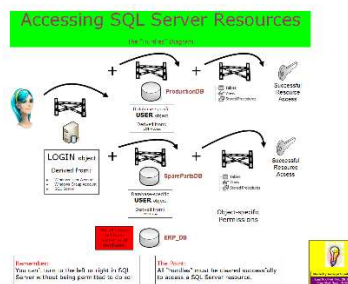
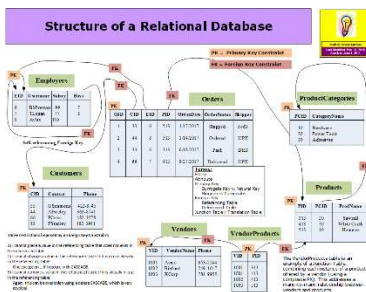
Power BI User Groups

Lansing WordPress Meetup

Church volunteer

A portfolio sample of some of my diagrams found at:

<http://www.e-squillace.com/techdiagrams-sqlserver>



George J. Squillace

S-Q-L is in the name!

East Lansing, MI • 517-881-5020 • GeorgeJr@e-Squillace.com

List of Skills

Querying skills

SELECT, INSERT, UPDATE, DELETE statements JOINS
WHERE, GROUP BY and aggregations, ORDER BY UNION, EXCEPT, INTERSECT, APPLY

Database Development skills

Table and Schema creation
Index design and implementation (clustered, non-clustered, columnstore)
Views, Stored Procedures, User Defined Functions and DML Triggers (basic)

Database Administration skills

Installation and configuration Instance and database security
Backup, restore and disaster recovery Job automation
Alert configuration Import and export data
Monitoring

Database Warehousing & SSIS skills

Debugging Incremental ETL design
Dimensional Modeling, Fact & Dimension table design
SSIS Control Flow – Tasks, Containers, Precedence Constraints
SSIS Data Flow – Sources, Destinations, Transformations
Production and deployment – SSIS Catalog, Environments, Variables

Reporting Services (SSRS) skills

Data Sources and Datasets

Data Regions (Table, Matrix, Gauge, etc.)

Grouping

Parameters, Filters, and Expressions

Portal Administration and Security

Navigation features – Document map, drill-down, drill through, interactive column sorting

Report delivery - Caching, Snapshots, and Subscriptions

Analysis Services (SSAS) skills

Multidimensional

Cube Wizard

Deployment

Dimension and Attribute design and implementation

Measure Group and Measure implementation

MDX (basic)

Actions, Perspectives, and KPIs (minimal)

Tabular

Import Data

Modeling, Relationships, and Hierarchies

DAX (intermediate)

Perspectives, and KPIs (minimal)

Deployment

Power BI skills

Get Data, Data Modeling, Relationships

Power Query Editor

Report development

Dashboard development

Power BI Service administration

Azure skills

Storage Account basics

Azure SQL Database

Azure Virtual Machines

General Technology skills

Very solid networking and TCP/IP knowledge

Routing basics

Windows Server OS knowledge

Active Directory, DNS, DHCP, Remote Access